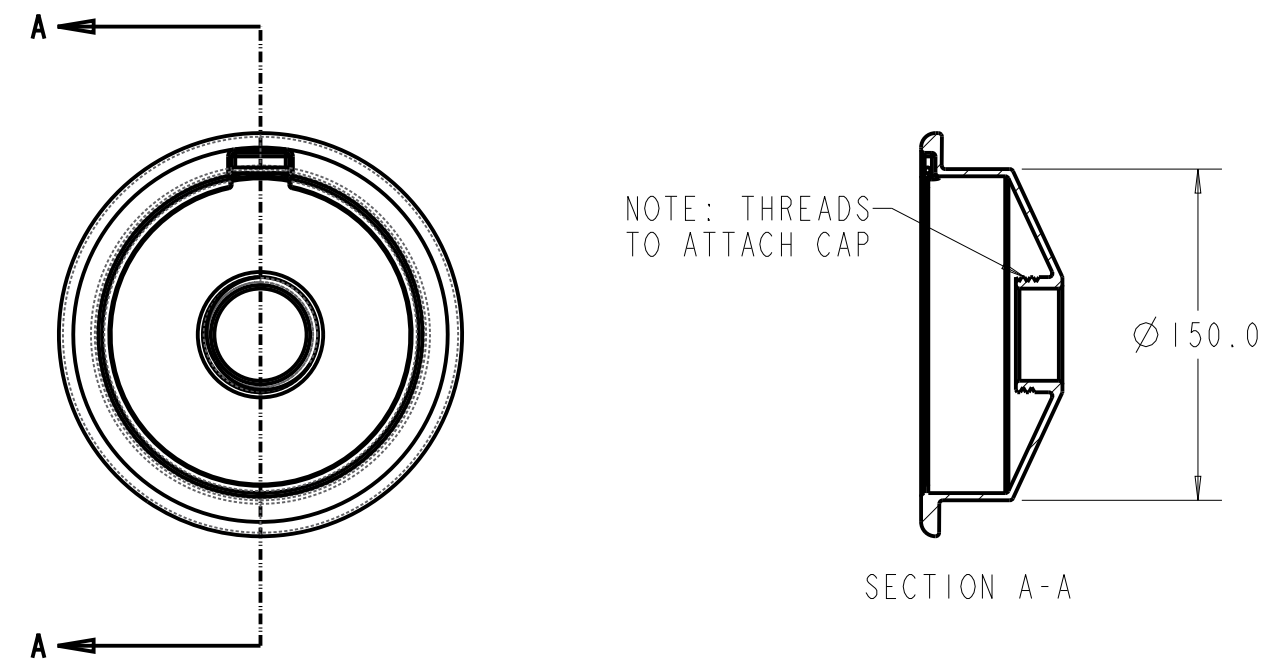
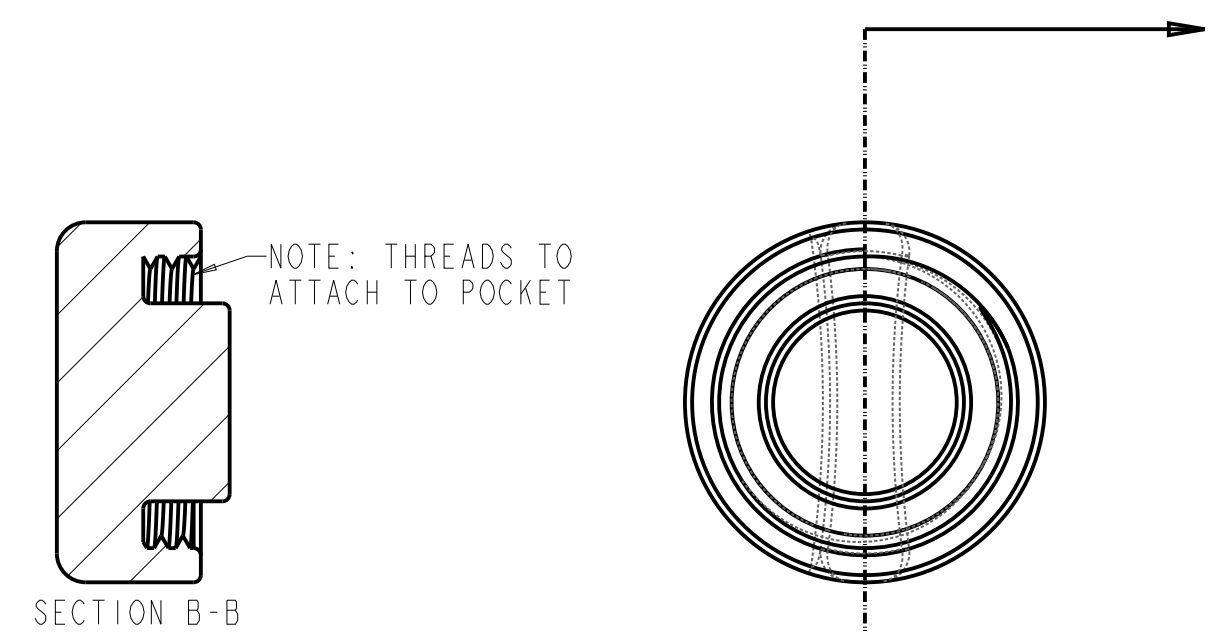


② PANEL

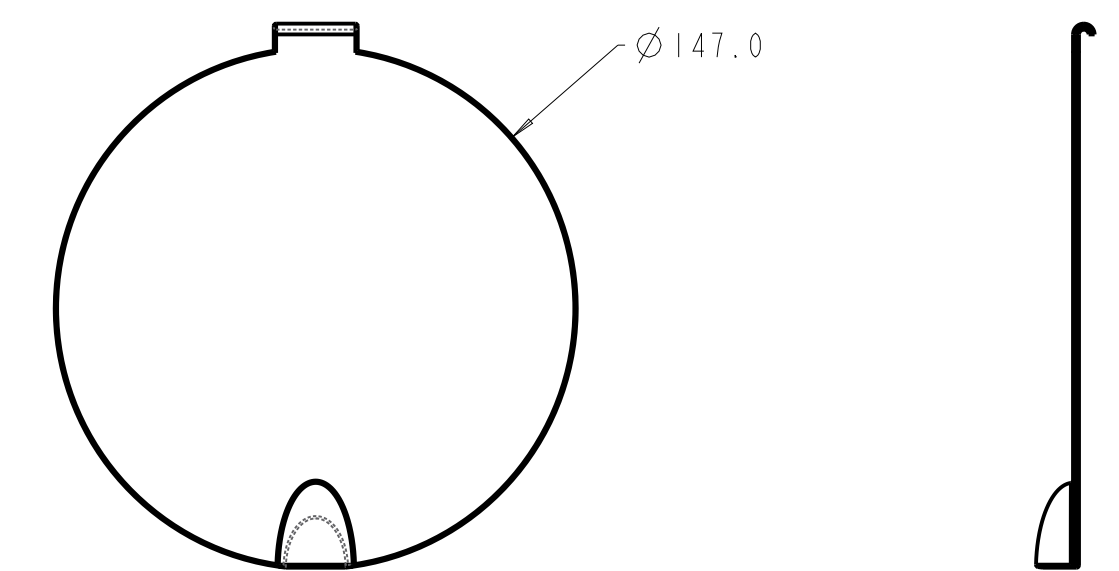


③ POCKET

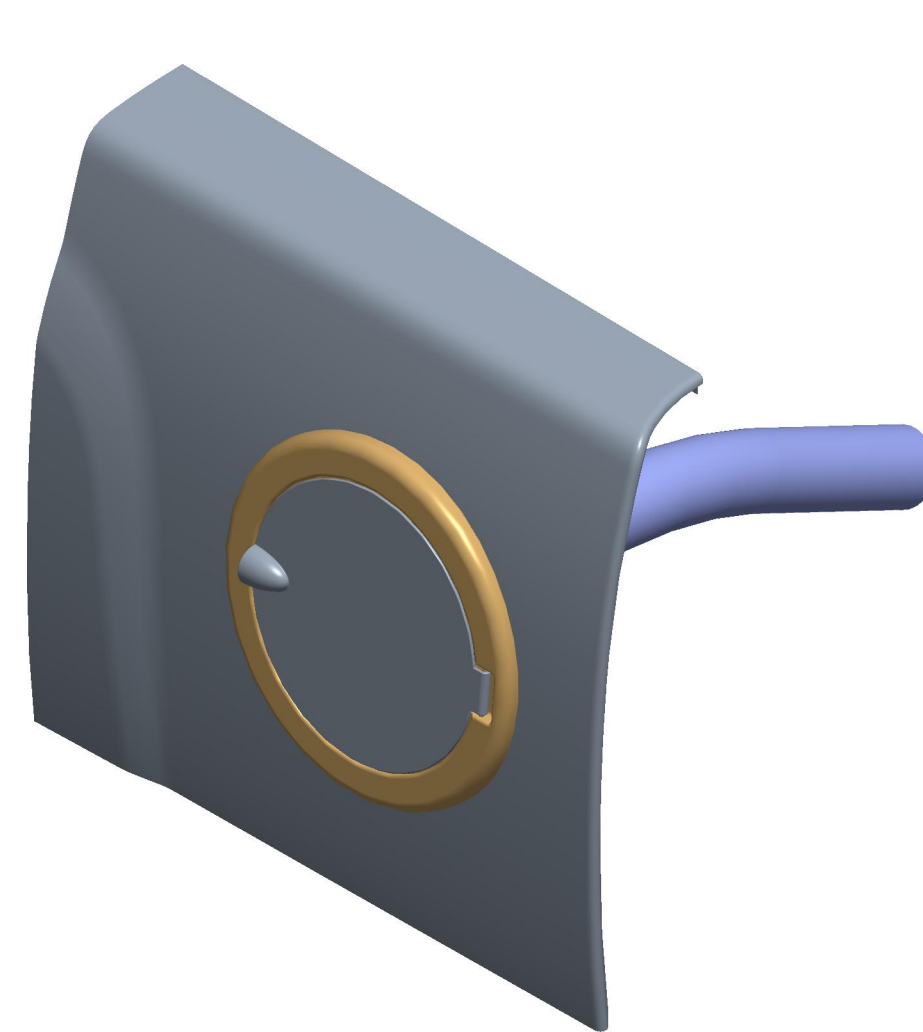
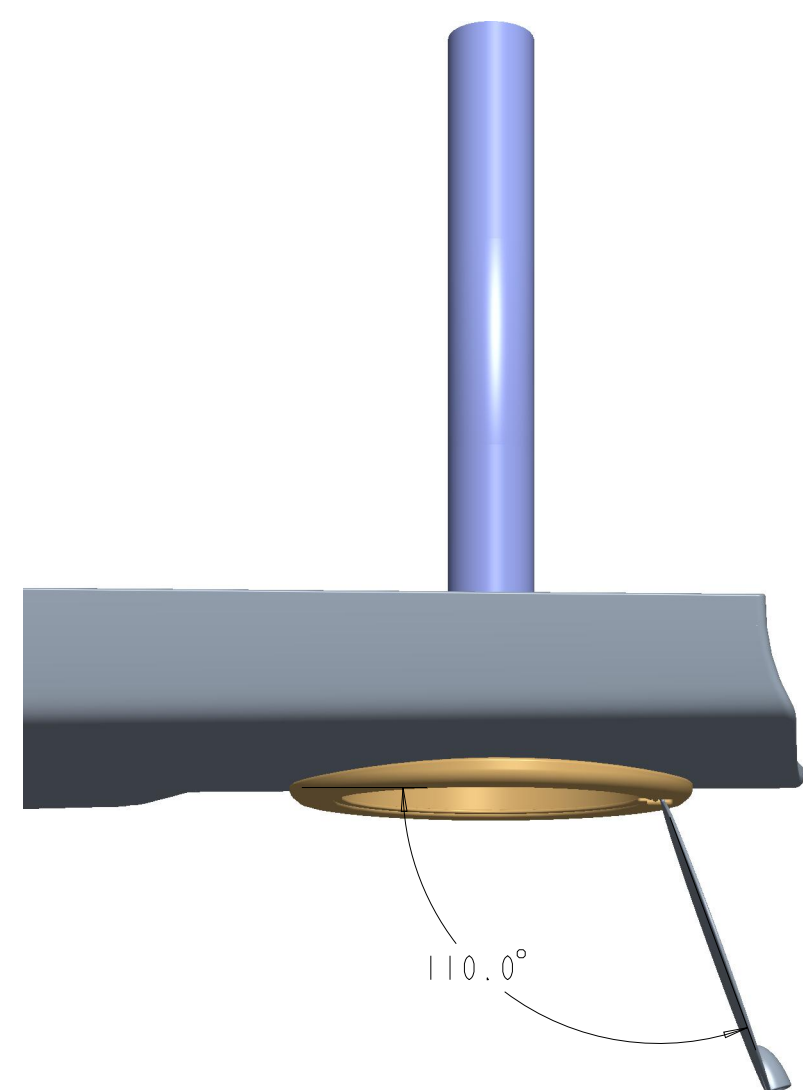


④ CAP

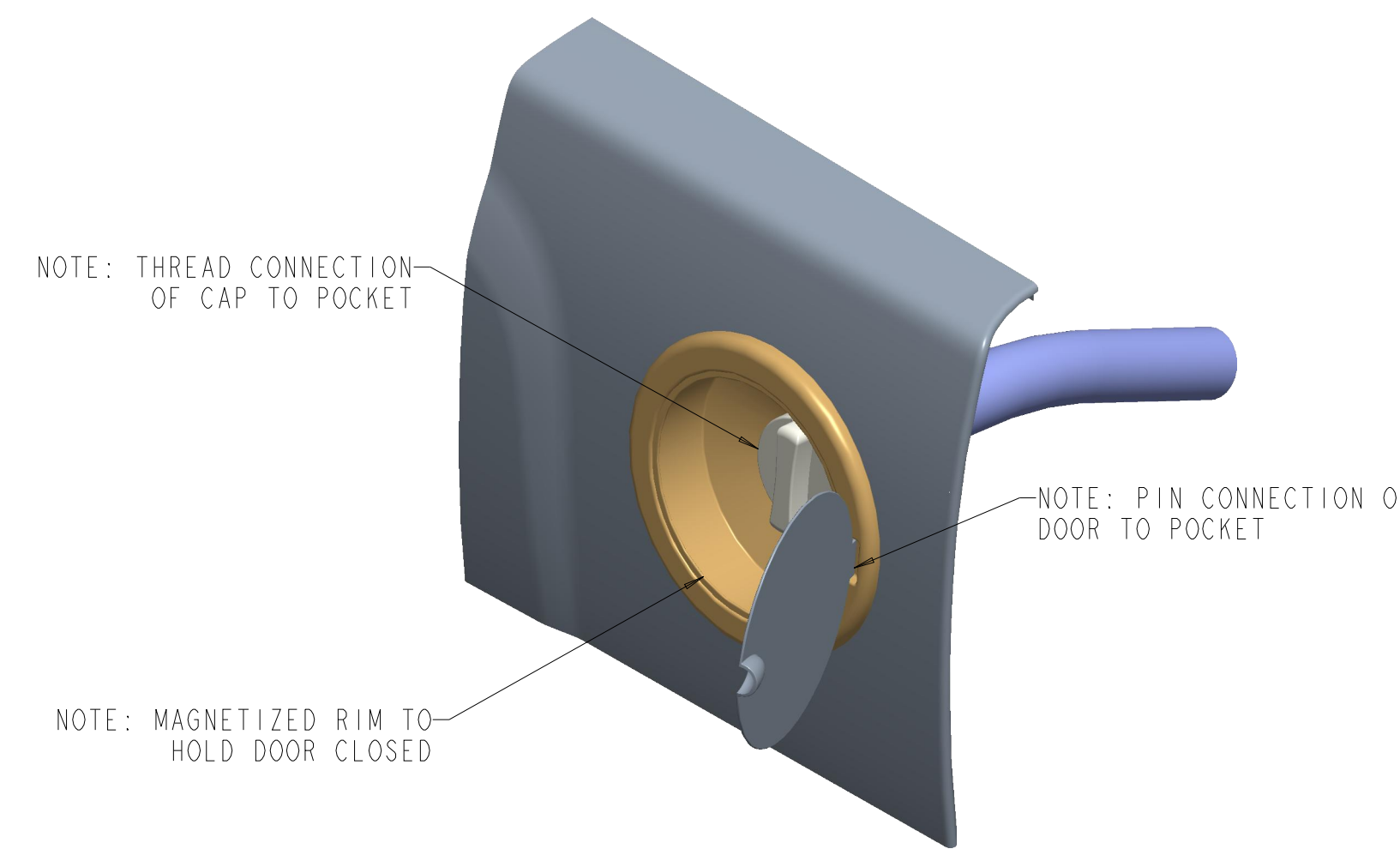
METRIC



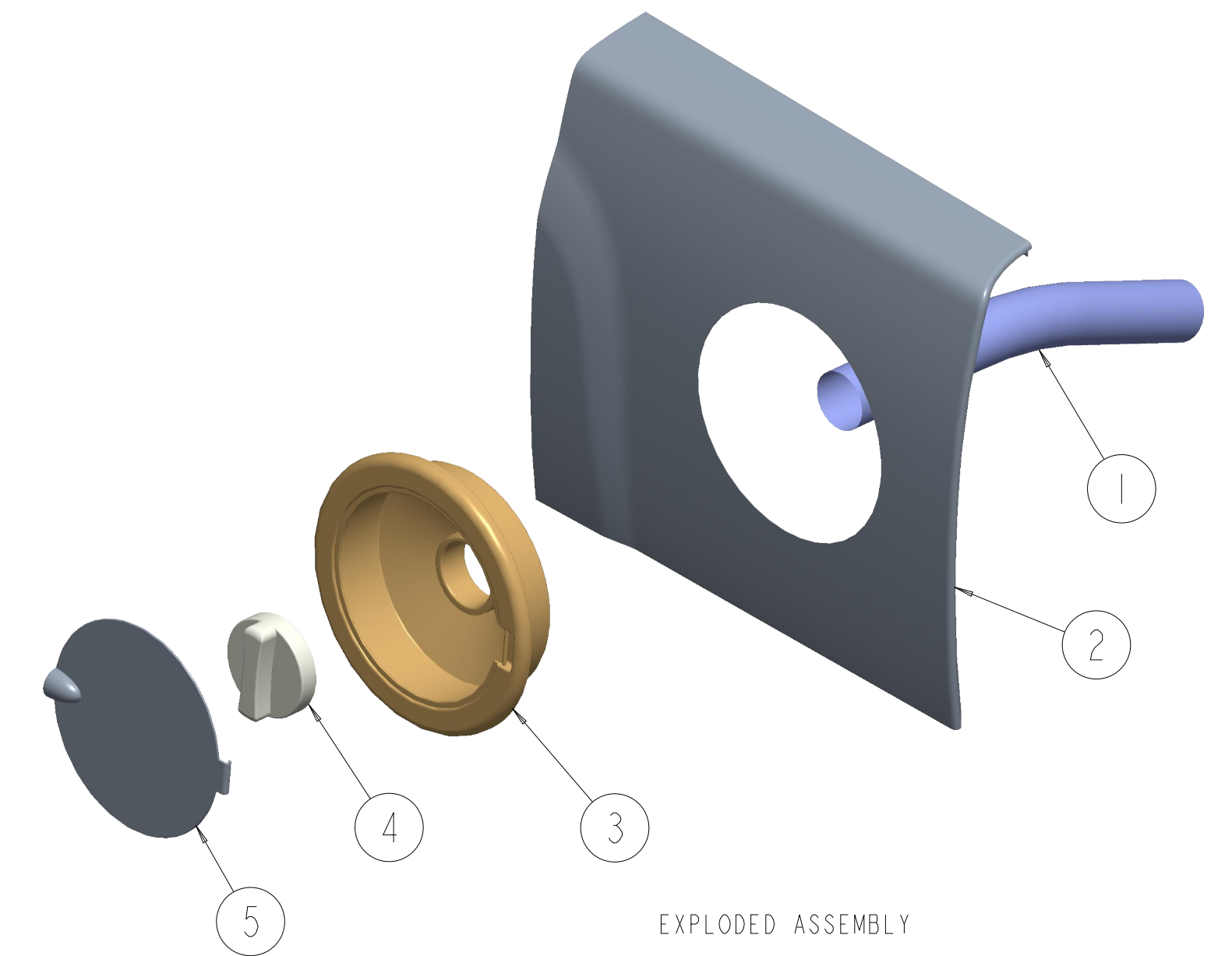
⑤ DOOR



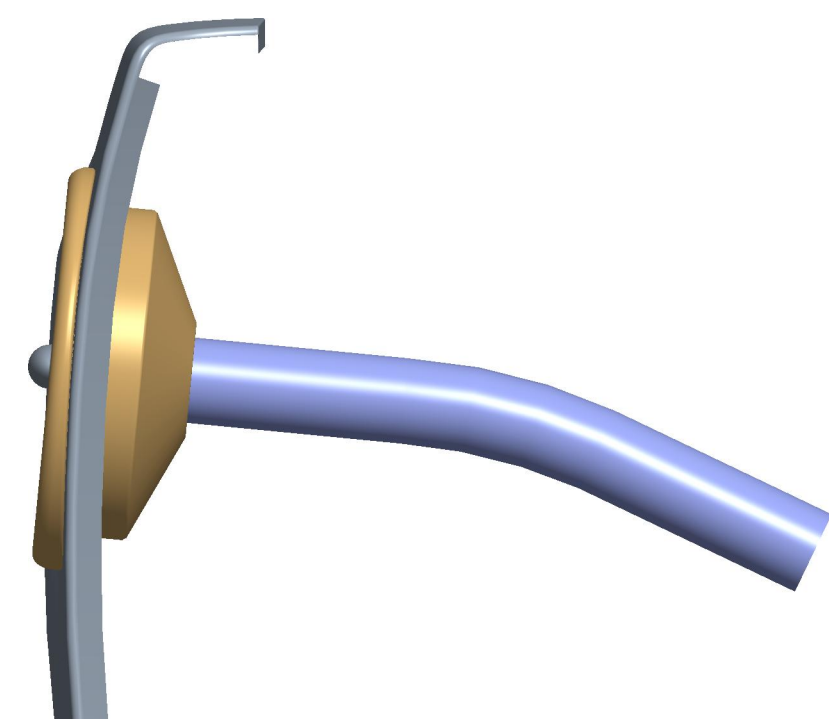
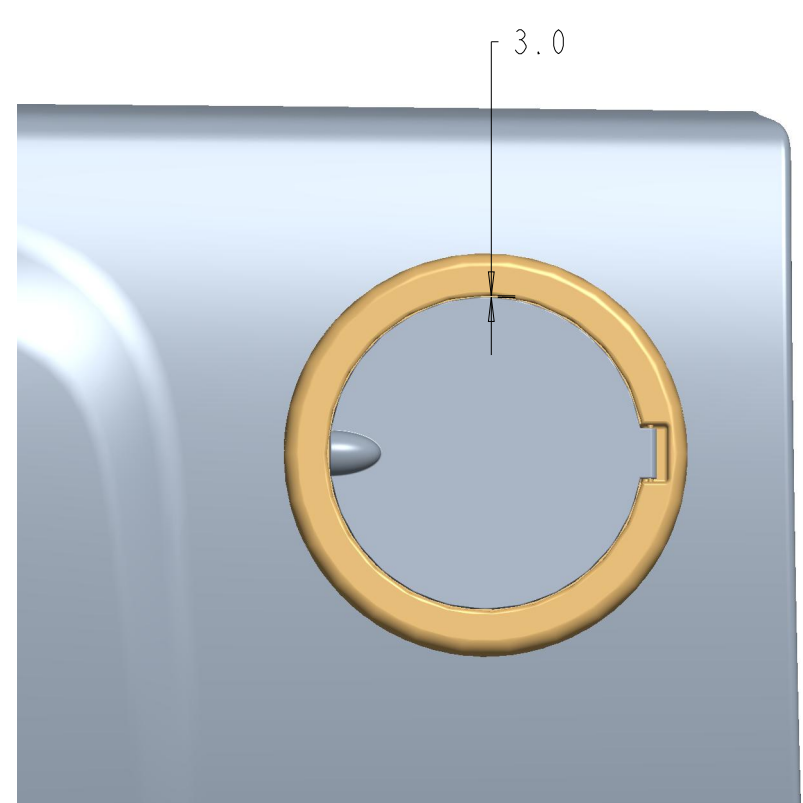
ASSEMBLED WITH DOOR CLOSED



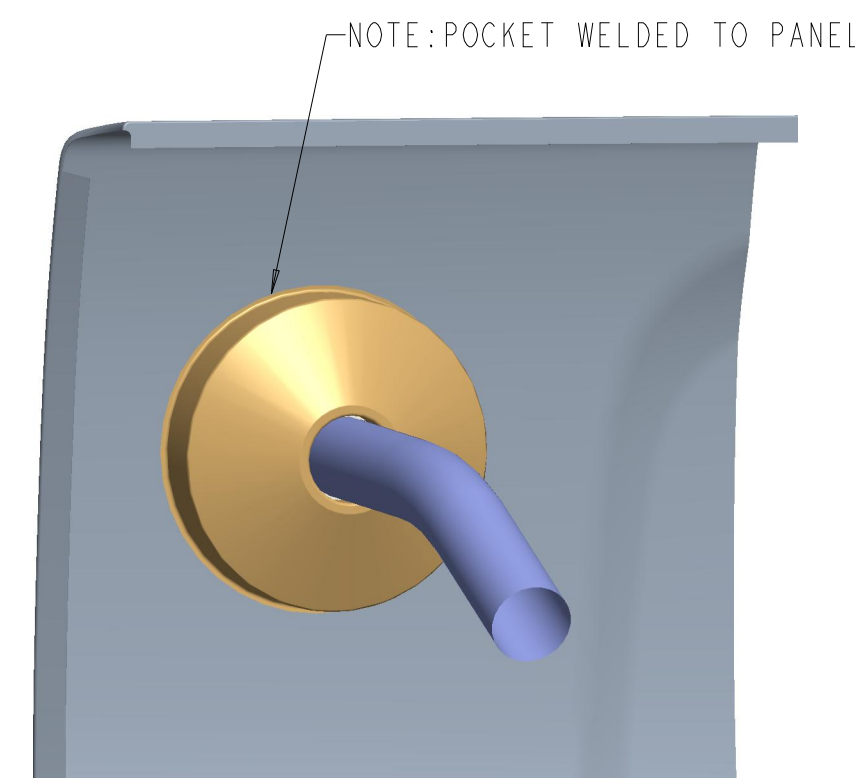
ASSEMBLED WITH DOOR OPEN



EXPLODED ASSEMBLY



ASSEMBLED



NOTE: ASSEMBLY INFORMATION

FUEL TUBE RESTS IN CENTER OF POCKET.

CAP IS REMOVED BY TWISTING HANDLE.

DOOR OPENS BY PULLING ON HANDLE.

BILL OF MATERIALS

PART #	PART NAME	QUANTITY
1	FUEL TUBE	1
2	PANEL	1
3	POCKET	1
4	CAP	1
5	DOOR	1

STUDENT NAME: JOSEPH ZAWISA

SCHOOL: BRIGHTON HIGH SCHOOL

GRADE LEVEL: 12 CATEGORY: ENGINEERING DESIGN

EMAIL ADDRESS:

TEACHER NAME: MR. JOURDEN